

# Coaxial 2 Way - 0 Degree 10 to 1450 MHz Power Splitter/Combiner 50 Ohm



## SPD2A-1450A



### Maximum Ratings

Operating Temperature	-55C to +100C
Storage Temperature	-55C to +100C
Power Input (as a splitter)	1W max.
Internal Dissipation	.125W max.

### Features

- \* wideband, 10 to 1450 MHz
- \* good isolation, 20 dB typ.
- \* excellent phase unbalance, 0.6 deg. typ
- \* good return loss, VSWR, 1.8:1 typ.

### CASE STYLE SPL1

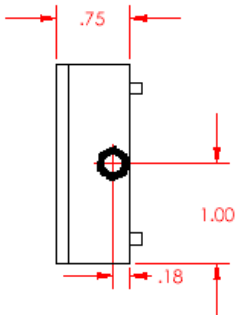
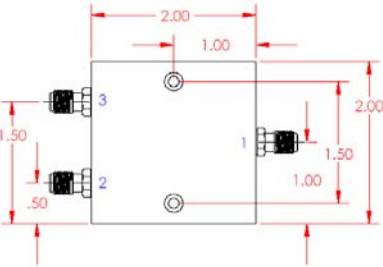
Model	Connectors	Price	Qty
SPD2A-1450A	SMA	\$43.00	1-9

### Coaxial Connections

SUM PORT	3
PORT 1	2
PORT 2	1

### Outline Drawing

CASE STYLE: SPL1



### Applications

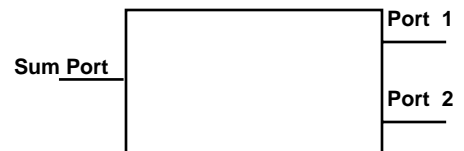
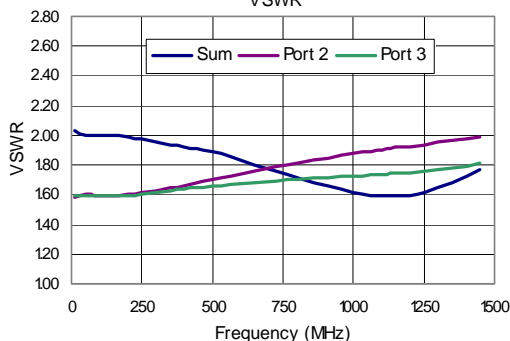
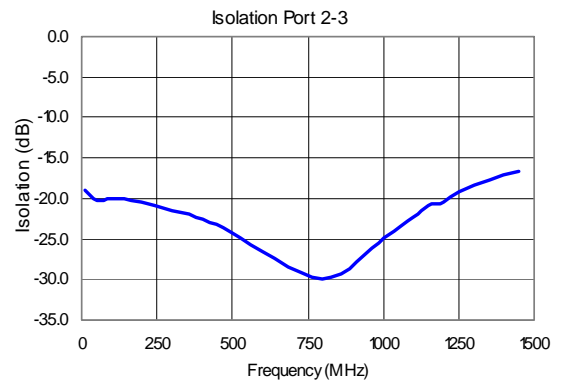
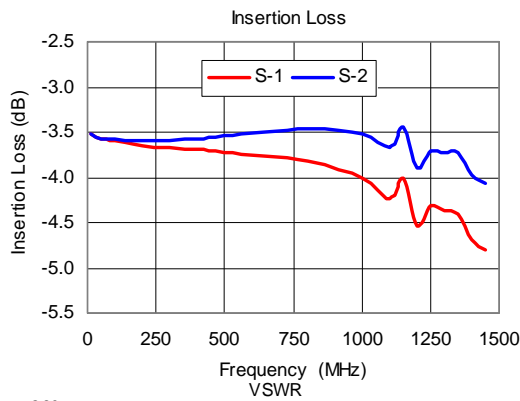
- \* cellular
- \* instrumentation
- \* PCS
- \* VHF.UHF

### Electrical Specifications

Freq Range MHz	Insertion Loss (dB)		Isolation Min (dB)	Amplitude Unbalance Max (dB)	Phase Unbalance Max. (Deg)
	Typ	Max			
10 - 1450	1.0	2.2	14	2.0	4

### Typical Performance Data

Frequency MHz	Return Loss	Insertion Loss (dB)		Isolation (dB)	Output Return Loss		Unbalance	
	SUM	S-1	S-2	Port 2 - Port 3	Port 1	Port 2	Amplitude	Phase
10.0	-9.4	-3.5	-3.5	-19.0	-12.9	-12.8	0.0	0.1
50.0	-9.5	-3.6	-3.6	-20.2	-12.8	-12.8	0.0	0.1
100.0	-9.5	-3.6	-3.6	-20.1	-12.8	-12.8	0.0	0.2
200.0	-9.6	-3.6	-3.6	-20.4	-12.7	-12.8	0.0	0.4
400.0	-10.0	-3.7	-3.6	-22.5	-12.1	-12.4	-0.1	0.7
500.0	-10.3	-3.7	-3.5	-24.3	-11.7	-12.2	-0.2	0.6
800.0	-11.6	-3.8	-3.5	-29.9	-10.8	-11.7	-0.4	0.5
1000.0	-12.6	-4.0	-3.5	-24.8	-10.3	-11.5	-0.5	0.0
1100.0	-12.9	-4.2	-3.7	-22.3	-10.1	-11.4	-0.6	0.3
1150.0	-12.8	-4.0	-3.5	-21.0	-10.1	-11.4	-0.6	0.2
1200.0	-12.8	-4.5	-3.9	-20.4	-10.0	-11.3	-0.6	0.6
1250.0	-12.5	-4.3	-3.7	-19.3	-9.9	-11.3	-0.6	0.8
1300.0	-12.3	-4.4	-3.7	-18.4	-9.8	-11.1	-0.6	0.9
1350.0	-11.9	-4.4	-3.7	-17.6	-9.7	-11.0	-0.7	0.8
1400.0	-11.5	-4.7	-4.0	-17.2	-9.7	-10.9	-0.7	1.2
1450.0	-11.1	-4.8	-4.1	-16.6	-9.6	-10.8	-0.7	1.4



Rev: